

ARRI X 5 Event

ARNOLD & RICHTER GMBH & CO BETRIEBS KG, PULVERMÜHLE, D-83071 STEPHANSKIRCHEN
CINE TECHNIK TELEFON: (08036) 3009-3084 FAX: (08036) 3009-3075

ARRI LIGHTING SOLUTIONS GMBH ERNST-AUGUSTIN-STRASSE 12, D-12489 BERLIN
TELEFON: (030) 678-233-0 FAX: (030) 678-233-99

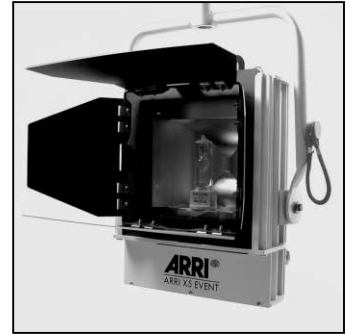
ARRI (GB) LIMITED 2 HIGHBRIDGE, OXFORD ROAD, UXBRIDGE, MIDDLESEX UB8 1LX
TELEPHONE: (0) 1895-457-000 FAX: (0) 1895-457-001

ARRI INC. 617 ROUTE 303, BLAUVELT, NY 10913-1109
NEW YORK OFFICE TELEPHONE: (845) 353-1400 FAX: (845) 425-1250

ARRI INC. 600 NORTH VICTORY BLVD., BURBANK, CA 91502-1639
BURBANK OFFICE TELEPHONE: (818) 841-7070 FAX: (818) 848-4028

ARRI CANADA LTD. 415 HORNER AVENUE, UNIT 11 ETOBICOKE, ONTARIO M8W 4W3
TELEPHONE: (416) 255-3335 FAX: (416) 255-3399

ARRI ITALIA S.R.L. VIALE EDISON, 318 - 20099 SESTO SAN GIOVANNI (MI)
TELEPHONE: (02) 2622 7175 FAX: (02) 242 1692



03 - 2007

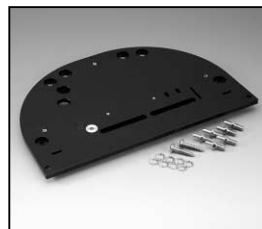
NOTE: WHEN ORDERING QUOTE PART NUMBER **BEMERKUNG: BEI BESTELLUNG IDENT.-NR. ANGEBEN**



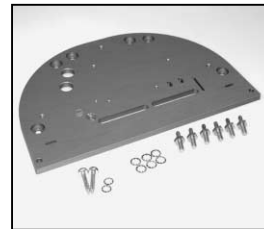
L4.82239SE
Cover plate silver
Deckplatte silber



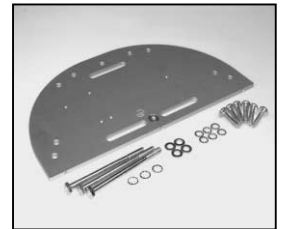
L4.82239XE
Cover plate black
Deckplatte schwarz



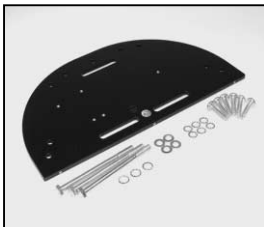
L4.82241.E
Intermediate plate black
Zwischenplatte schwarz



L4.82241SE
Intermediate plate silver
Zwischenplatte silber



L4.82238SE
Bottom plate silver
Bodenplatte silber



L4.82238XE
Bottom plate black
Bodenplatte schwarz



L4.81229.E
Top latch
Torsicherung



L4.82237.E
Extrusion left silver
Rippenblech links silber



L4.82237XE
Extrusion left black
Rippenblech links schwarz



L4.82725.E
Extrusion right silver
Rippenblech rechts silber



L4.82725XE
Extrusion right black
Rippenblech rechts schwarz



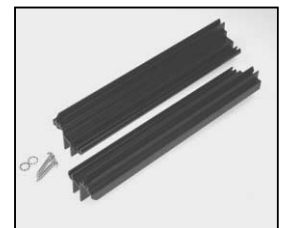
L4.82175.E
Extrusion middle silver
Rippenblech mitte silber



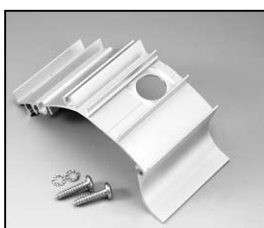
L4.82175XE
Extrusion middle black
Rippenblech mitte schwarz



L4.82236.E silver / silber
Insert section left and right
Einschubprofil links u. rechts



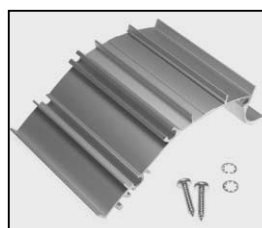
L4.82236XE black / schwarz
Insert section left and right
Einschubprofil links u. rechts



L4.82243.E silver / silber
Bottom extrusion left
Rippenblech unten links



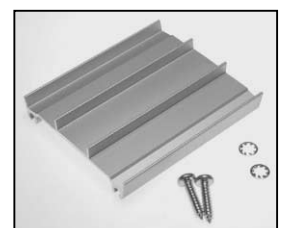
L4.82243XE black / schwarz
Bottom extrusion left
Rippenblech unten links



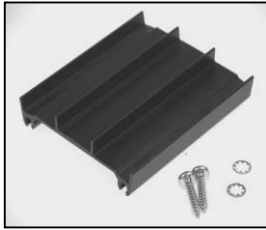
L4.82257.E silver / silber
Bottom extrusion right
Rippenblech unten rechts



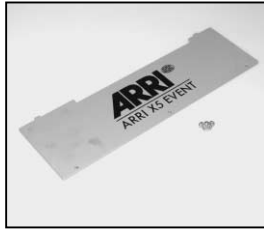
L4.82257XE black / schwarz
Bottom extrusion right
Rippenblech unten rechts



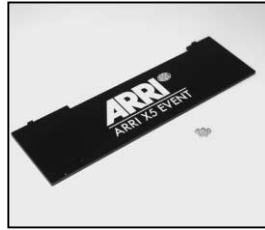
L4.82176.E silver / silber
Bottom extrusion middle
Rippenblech unten mitte



L4.82176XE black / schwarz
Bottom extrusion middle
Rippenblech unten mitte



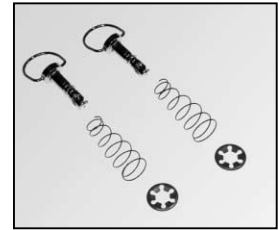
L4.82877.E
Front plate silver
Frontplatte silber



L4.82877XE
Front plate black
Frontplatte schwarz



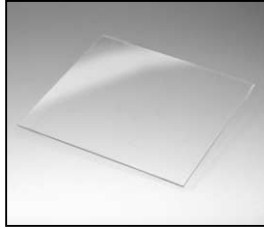
L4.82206.E
Reflector
Reflektor



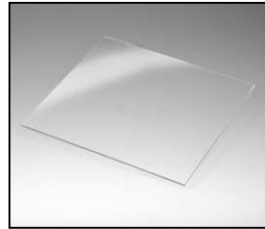
L4.83265.E
Fast lock
Schnellverschluss



L4.82453.E
Frame for 2 pcs of
Protection glasses
Rahmen für 2 St.
Sicherheitsgläser



L4.82465XE
Protective glass clear (1 pcs)
Schutzscheibe klar (1 St.)



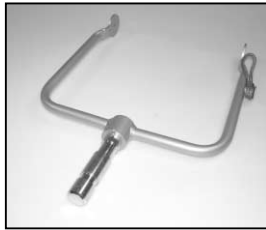
L4.82249.E
Protective glass frosted (1 pcs)
Schutzscheibe gefrostet (1 St.)



L4.82487.E
Stirrup bracket silver
Büggelager silber



L4.82487XE
Stirrup bracket silver
Büggelager silber



L4.82466SE
Stirrup silver
Haltebügel silber



L4.82466.E
Stirrup black
Haltebügel schwarz



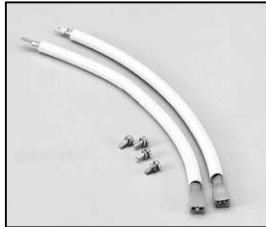
L4.80104.E
Spigot
Aufhängezapfen



L4.82115.E
Stirrup mounting-set
Büggelbefestigungs-Set



L4.83153.E
Friction disk
Friktionsscheibe



L4.78138.E
H.T. cable cpl.
Lampenkabel kpl.



L4.73824.E
Lampholder compl.
Lampenfassung kpl.



L4.82117.E
Lampholder + support
Lampenfassung + Träger



L4.82247.E
Lampholder support
Fassungsträger



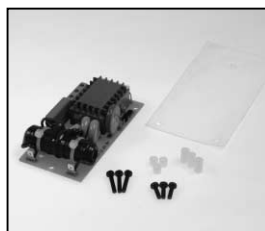
L4.73817.E
Lamp lock shaft
Lampenklemmhebel



L4.82118.E
Safety switch compl.
Endschalter kpl.



L4.87769.E
Single Safety switch
Single Endschalter



L4.79825.E
Ignitor
Zündgerät



L4.83063.E
Strain relief
Zugentlastung



L4.79824.E
Mains cable Event
Scheinwerferkabel Event



L4.79838.E
Connecting wires
Verbindungsdrähte



L4.76828.E
Schaltbau connector (Male) 5 pins
Schaltbaustecker (Stiftkontakt)
5-polig



L4.76829.E
Schaltbau connector (Female) 5 pins
Schaltbaustecker (Buchsenkontakt)
5-polig



L4.76833.E
Schaltbau connector (Male) 13 pins
Schaltbaustecker (Stiftkontakt)
13-polig
MULTICORE



L4.76834.E
Schaltbau connector (Female) 13 pins
Schaltbaustecker (Buchsenkontakt)
13-polig
MULTICORE



L4.76836.E
 Female connector 5 pins
 Flanschdose (Schaltbau)
 5-polig
 SPLITBOX



L4.76838.E
 Male connector 13 pins
 Flanschstecker (Schaltbau)
 13-polig
 SPLITBOX



L4.70189.E
 Paint silver metallic similar
 RAL 9011
 Lack silber metallic ähnlich
 RAL 9011



L4.70183.E
 Paint black similar RAL 9011
 Lack schwarz ähnlich RAL 9011



L4.70186.E
 Paint thinner
 Farb-Verdünnung