

ELECTRONIC BALLAST ELEKTRONISCHES VORSCHALTGERÄT 1200 EB



ARNOLD & RICHTER CINE TECHNIK	GMBH & CO BETRIEBS KG, PULVERMÜHLE, D-83071 STEPHANSKIRCHEN TELEFON: (08036) 3009-3084 FAX: (08036) 3009-3075
ARRI LIGHTING SOLUTIONS GMBH	ERNST-AUGUSTIN-STRASSE 12, D-12489 BERLIN TELEFON: (030) 678-233-0 FAX: (030) 678-233-99
ARRI (GB) LIMITED	2 HIGHBRIDGE, OXFORD ROAD, UXBRIDGE, MIDDLESEX UB8 1LX TELEPHONE: (0) 1895-457-000 FAX: (0) 1895-457-001
ARRI INC. NEW YORK OFFICE	617 ROUTE 303, BLAUVELT, NY 10913-1109 TELEPHONE: (845) 353-1400 FAX: (845) 425-1250
ARRI INC. BURBANK OFFICE	600 NORTH VICTORY BLVD., BURBANK, CA 91502-1639 TELEPHONE: (818) 841-7070 FAX: (818) 848-4028
ARRI CANADA LTD.	415 HORNER AVENUE, UNIT 11 ETOBICOKE, ONTARIO M8W 4W3 TELEPHONE: (416) 255-3335 FAX: (416) 255-3399
ARRI ITALIA S.R.L.	VIALE EDISON, 318 - 20099 SESTO SAN GIOVANNI (MI) TELEPHONE: (02) 2622 7175 FAX: (02) 242 1692

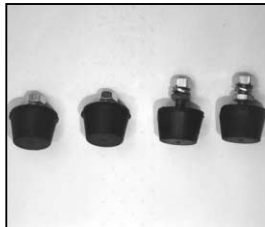


03 - 2007

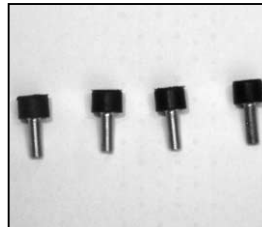
NOTE: WHEN ORDERING QUOTE PART NUMBER **BEMERKUNG: BEI BESTELLUNG IDENT.-NR. ANGEBEN**



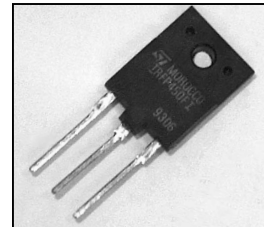
L4.82501.E
Front handle-set cpl. (2 pieces)
Frontgriff-Set kompl. (2 Stück)



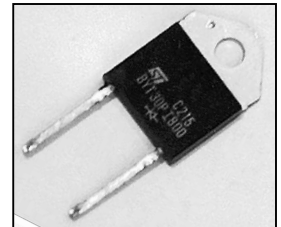
L4.82502.E
Rubber foot-set cpl. (4 pieces)
Gummifuß-Set kompl. (4 Stück)



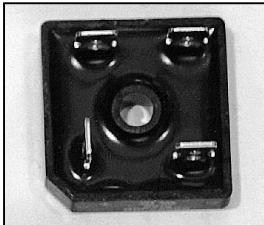
L4.82503.E
Rubber foot-set back (4 pieces)
Gummifuß-Set Rückwand (4 St.)



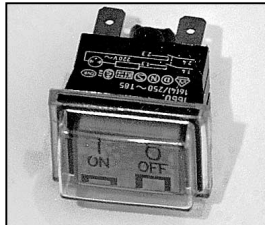
L4.82508.E
Power FET IRFP 450 FI
Power FET IRFP 450 FI



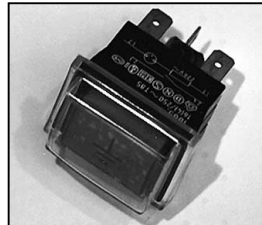
L4.82509.E
Diode bit 30 PI 800
Diode Bit 30 PI 800



L4.82510.E
Input rectifier
Netzgleichrichter



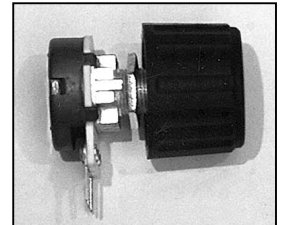
L4.82513.E
Mains switch
Netzschalter



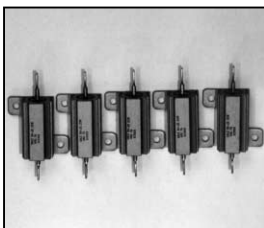
L4.82514.E
Earth test switch
Erdtaster



L4.82515.E
Low noise switch with knob
Low Noise-Schalter
mit Drehknopf



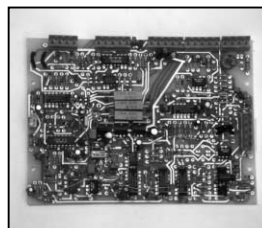
L4.82516.E
Dimm pot with knob
Dimmpotentiometer
mit Drehknopf



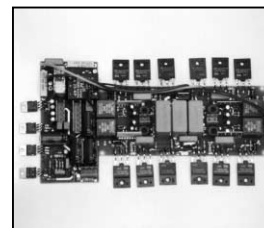
L4.82517.E
Start resistor-set (5 pieces)
Startwiderstand-Set (5 Stück)



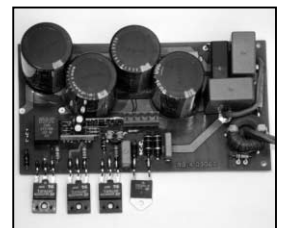
L4.82518.E
Fuse-set (10 pieces)
Feinsicherung-Set (10 Stück)



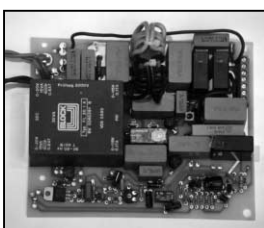
L4.82520.E
Control board
Regelkarte



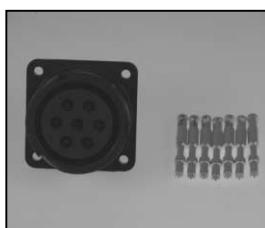
L4.82521.E
LF-gate drive cpl.
NF-Ansteuerung kpl.



L4.82522.E
HF-gate drive cpl.
HF-Ansteuerung kpl.



L4.82523.E
Mains board
Trafokarte



L4.83859.E
Veam output connector
(female)
Veam Output Stecker
(Buchsenkontakt)